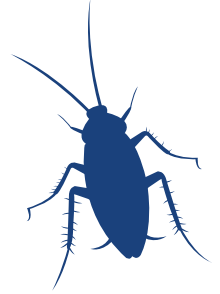
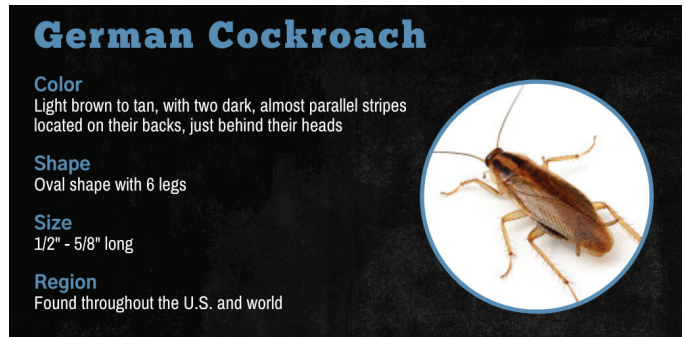


PEST PREVENTION TIPS FOR HEALTH CARE FACILITIES

GERMAN COCKROACHES



The German cockroach is classified as a domestic cockroach because they rarely live outdoors. When German cockroaches infest a facility, they typically have been carried in on goods or employee personal belongings. The one exception is when there are attached structures where the cockroaches may move through wall voids from one unit to the next.



German cockroaches are omnivorous and will feed on a wide variety of foods. It can be difficult to limit all potential food sources for this insect so a major focus is denying harborage through sealing of cracks and crevices. German cockroaches prefer areas where there is moisture and warmth. Concentrate on these preferred harborage areas when inspecting for cockroaches and sealing cracks.

- ✓ Inspect incoming shipments to prevent introductions of the pest into the facility. This not only includes food shipments but other items like linens.
- ✓ German cockroaches can be introduced by employees. Have a dedicated area for employees to keep personal belongings and monitor the area for pests like the German cockroach.
- ✓ Seal cracks and crevices in food service and preparation areas to reduce shelter. The less available harborage, the fewer cockroaches. However, if you can't effectively seal them out of an area, keep the area open and allow for easy inspection and treatment.
- ✓ Minimize the use of corrugated cardboard for long term storage of items. German cockroaches like the corrugations and folds that a cardboard box provides. Cardboard is not cleanable. It is better to use clear plastic totes or bins with lids. The clear plastic will allow you to see inside and the lid and help prevent pest access.
- ✓ Make sure leaks are repaired promptly. These are insects that like high humidity and moisture. Reducing moisture and water can be helpful in reducing their ability to survive.
- ✓ Reduce clutter. Clutter makes it difficult to inspect areas for pests like cockroaches.