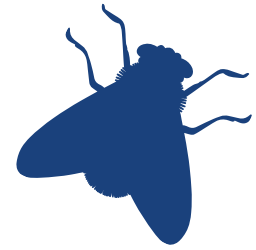


## PEST PREVENTION TIPS FOR HEALTH CARE FACILITIES

# FILTH FLIES



Unlike the small flies like phorid and small fruit flies, the larger filth flies are not commonly breeding indoors. Typically, these flies are coming in from the exterior and exclusion and reduction of attractions are key to their management. Fly control is critical in health care facilities and their management should take priority.

### HOUSE FLY

**Color**  
Dark gray with four dark stripes on the area behind the head

**Shape**  
Small oval shape

**Size**  
1/4" long

**Region**  
Found throughout the U.S. and world



- Keep doors closed when not in use. Make sure doors are properly sealed around the sides and base.
- Automatic doors should stay open only long enough for people to safely enter and exit. Check the timing mechanisms for these doors on a regular basis.
- Keep dumpster and dumpster pads clean. Ask waste haulers to clean dumpsters, especially during the warmer months. If they do not provide this service, make arrangements for facility staff to perform routinely.
- All exterior trash receptacles should have self-closing lids to decrease accessibility of garbage to flies and to reduce odors emanating from garbage.
- Make sure vents are properly screened to exclude flies and other insects.
- Utilize insect light traps on the interior to intercept flies that may have gained access.